

Suomalaisten IAC jäsenten näyttely Taiwanissa 2018

Contemporary Touch - keramiikkataidetta Suomesta

Sanyi Fu-Guei Gallery, 15.9 – 14.10.2018

Näyttelyyn osallistuvat taiteilijat ovat Erna Aaltonen, Åsa Hellman, Catharina Kajander, Min-Kyoung Kim, Kirsi Kivivirta, Maart Mäkelä, Nathalie Lautenbacher, Leena Mäki-Patola, Pekka Paikkari, Suck-Woo Park (Suku Park), Päivi Rintaniemi, Johanna Rytkölä, Satu Syrjänen, Kati Tuominen-Niittyä, Karin Widnäs ja Tapio Yli-Viikari.



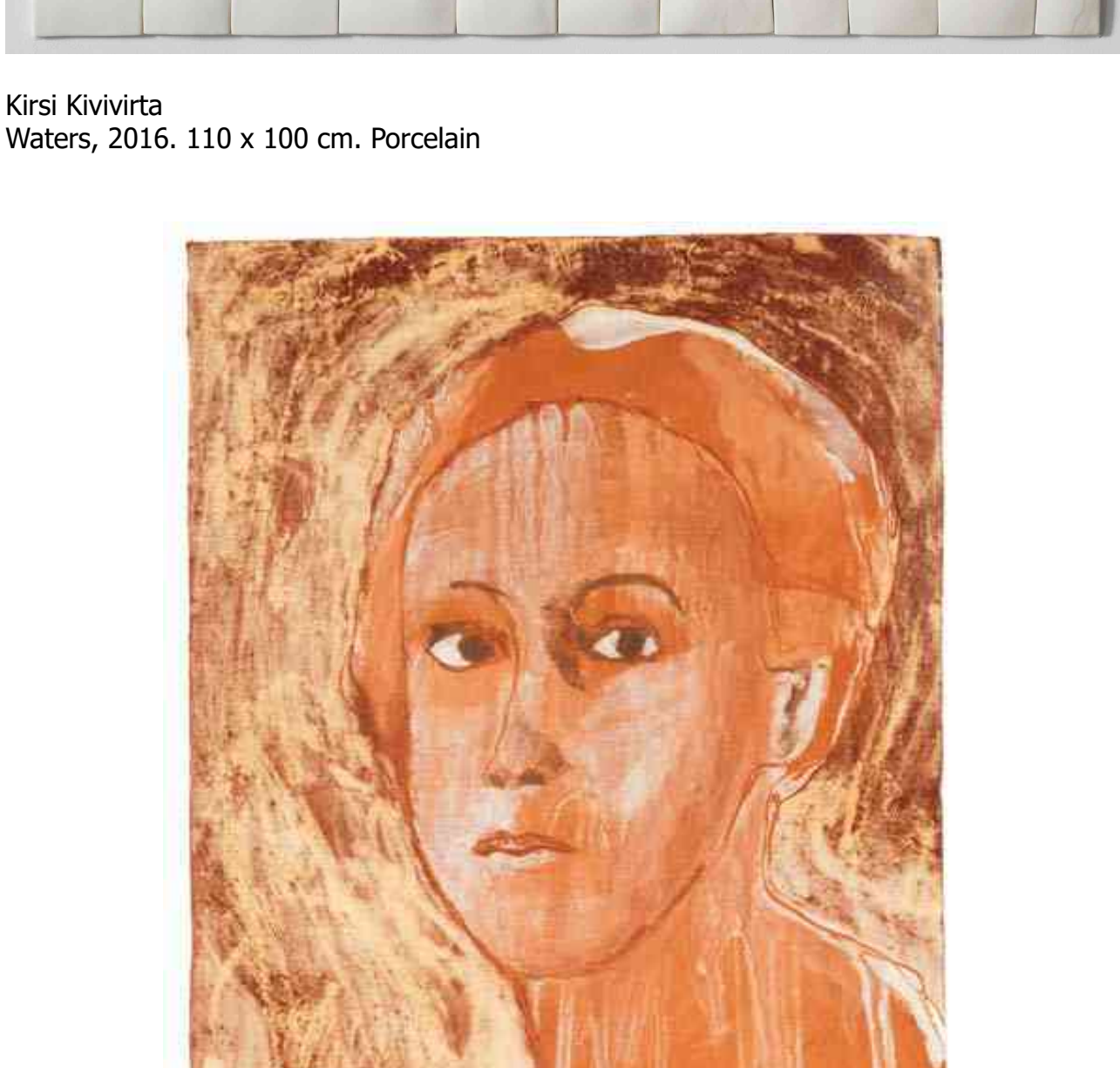
Erna Aaltonen
Dawn, 2015. Ø 50 cm



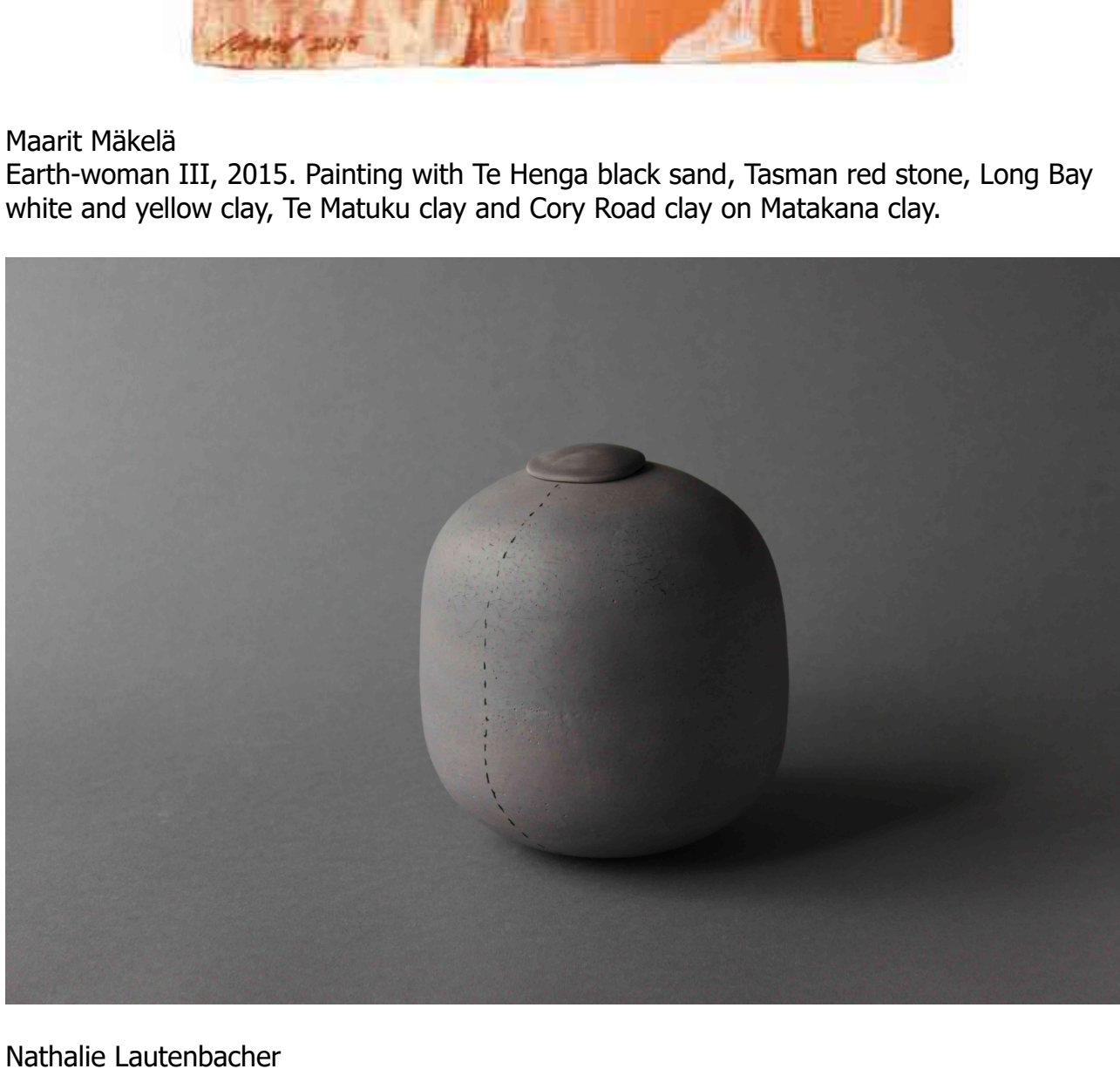
Åsa Hellman
Summer of Chanterelles, 2012. Stoneware sculptures. Ceramic mosaiques, slips and lustres. Sizes 20-60 cm



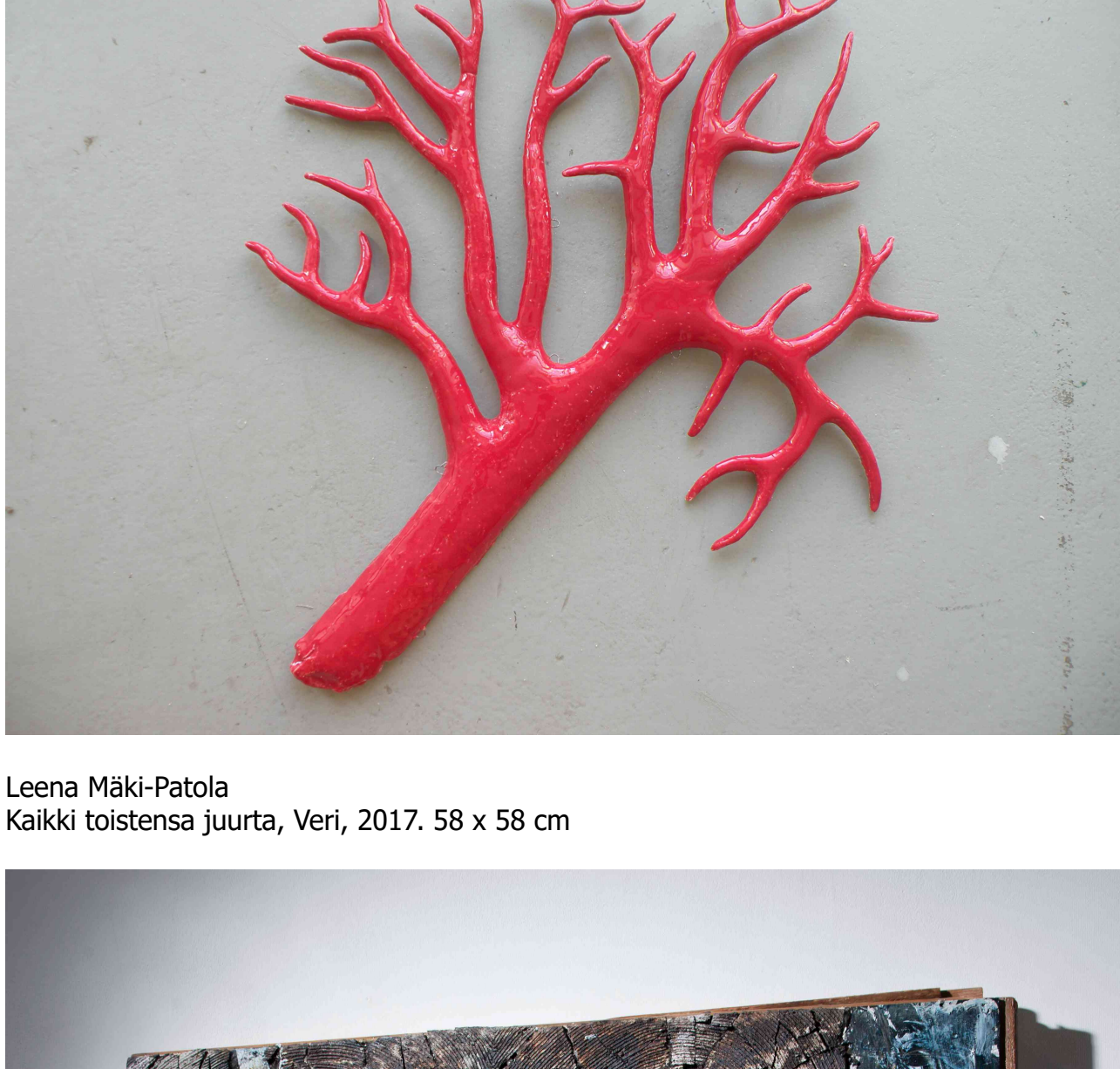
Catharina Kajander
Casted porcelain cloud, 2012. 24 x 35 x 12 cm



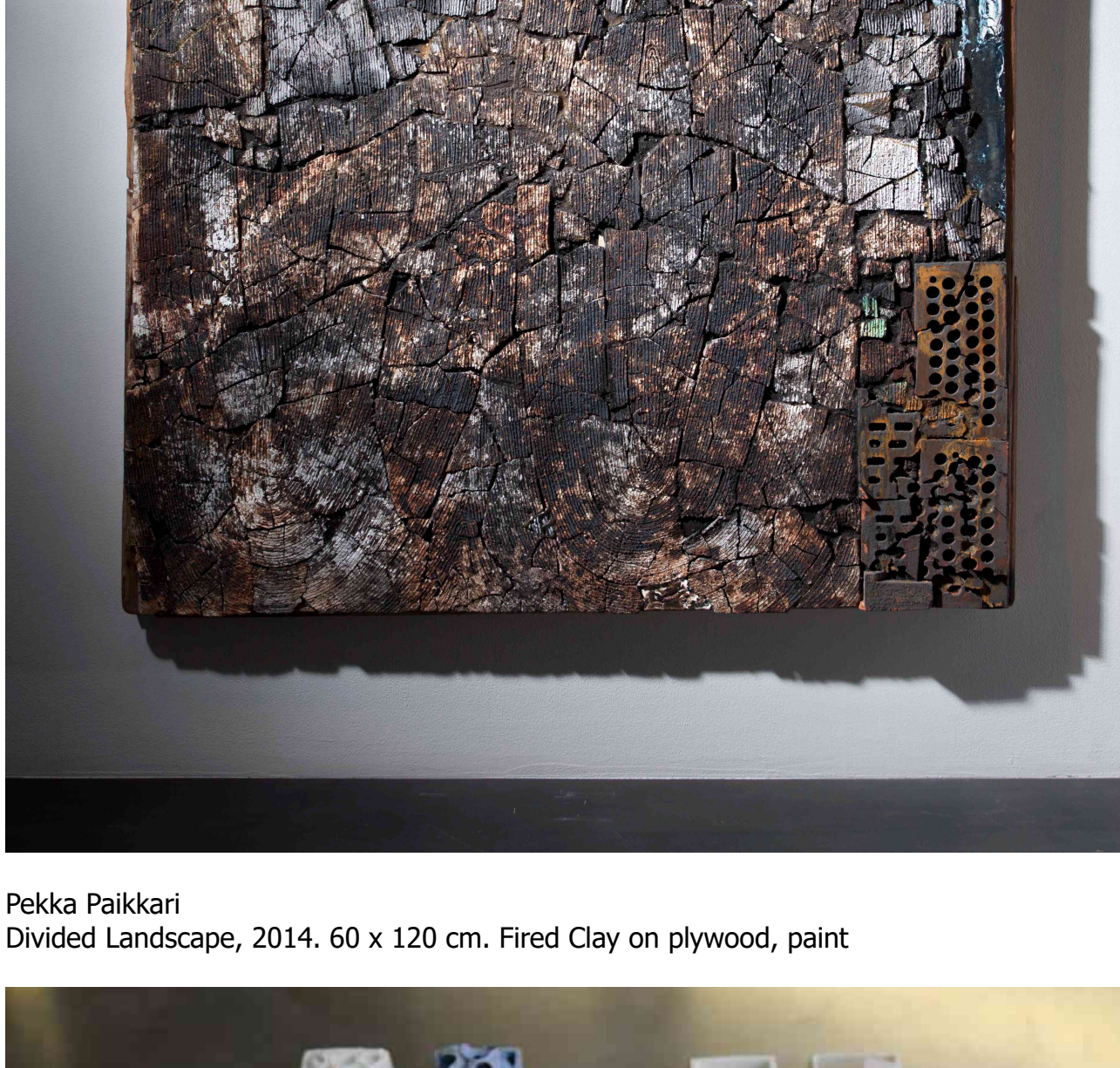
Min-Kyoung Kim
Lotus, 2015. 40 x 30 x 20 cm. Stoneware, metal



Kirsi Kivivirta
Waters, 2016. 110 x 100 cm. Porcelain



Maart Mäkelä
Earth-woman III, 2015. Painting with Te Henga black sand, Tasman red stone, Long Bay white and yellow clay, Te Matuku clay and Cory Road clay from Matakana clay.



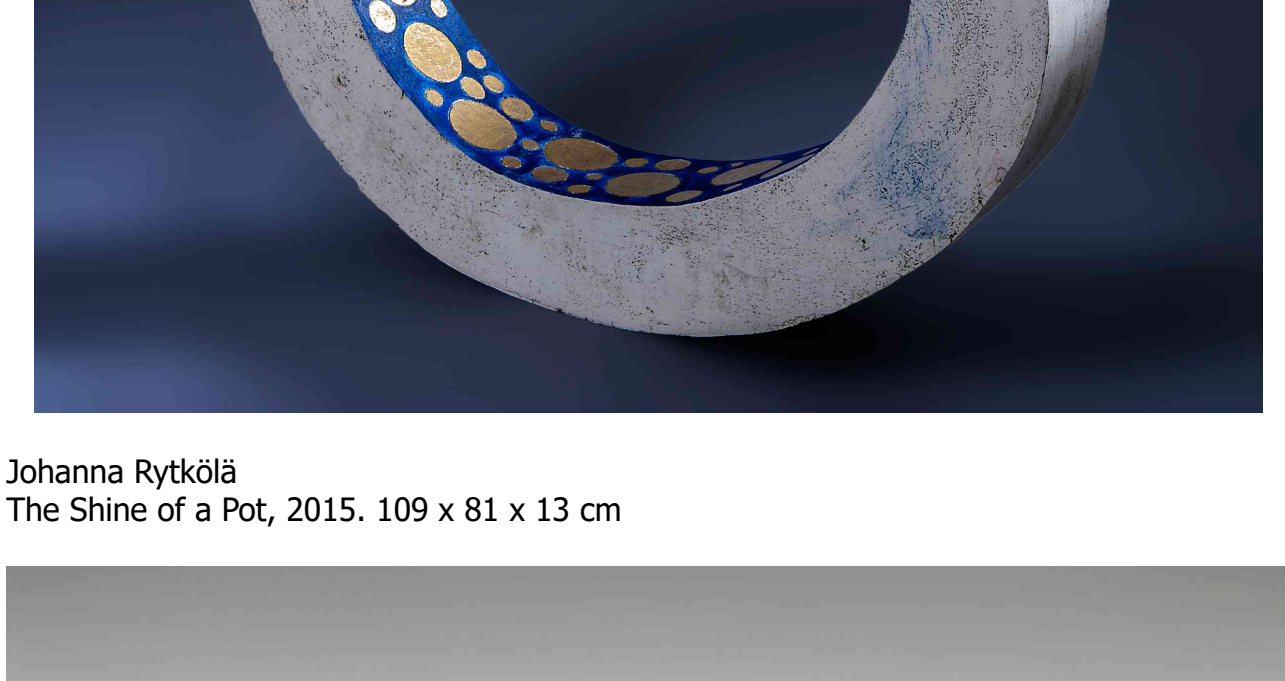
Nathalie Lautenbacher
GREY URN. From the series POLKU – PATH. W20 D20 H30 cm



Leena Mäki-Patola
Kaikki toistensa juurta, Veri, 2017. 58 x 58 cm



Pekka Paikkari
Divided Landscape, 2014. 60 x 120 cm. Fired Clay on plywood, paint



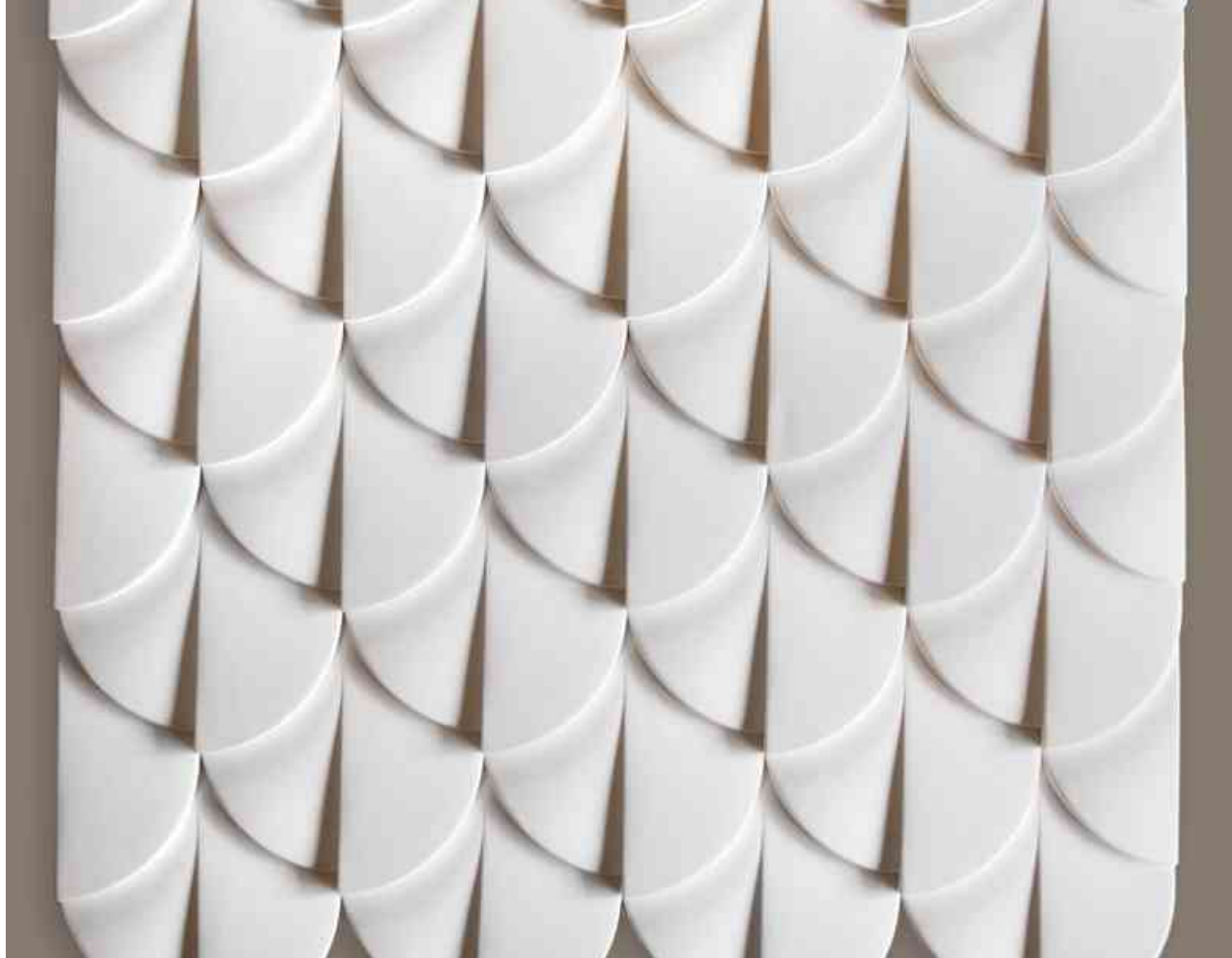
Suck-Woo Park (Suku Park)
Rain Drop, 2016. Porcelain slip, 48 x 8 x 5 cm / each



Päivi Rintaniemi
Fluxus, 2015. 84 x 53 x 62 cm



Johanna Rytkölä
The Shine of a Pot, 2015. 109 x 81 x 13 cm



Satu Syrjänen
MANDORLA, 2014. Stoneware clay



Kati Tuominen-Niittyä
No Name, 2016
60 cm Handmade unique work, stoneware, ribbon technique engobe decoration hand painted, 1250 C



Karin Widnäs
Corylus-reliefi, 2014. 80 x 100 cm



Tapio Yli-Viikari
Covered vase, 2016. 35 cm, porcelain